



Before assembling your model kit please read through the instructions carefully. Next, prepare all the tools needed for the job. Modelling knife is required to remove the parts safely from the frame. Do not remove the parts from the frame by pushing them forcefully - some parts are fragile and can be easily damaged. After the removal, it is recommended to sand the tabs and possible roughnesses left after cutting from the frame.

Please remember to always cut away from your body and fingers!

For gluing use PVA or cyanoacrylate glue. Always remember to dry fit before gluing to check if all joints fit correctly. Cyanoacrylate glue allows for a faster assembly, however gives you less time for possible corrections. PVA glue is slower, but will give you more time for altering the position of the elements.

Before painting the model, undercoat it with matt acrylic spray paint to protect wood from absorbing the water from your water-soluble paints. Matt acrylic car primer will do. Give it plenty of time to dry. Afterwards, you can base coat your model with your standard hobby paints.

NOTE:

These instructions are available online at:
<http://www.tabletopscenics.com/EN-H19/download.html>



We would like to express our gratitude for your purchase and encourage to check many other fantastic constructions from this series. If you are looking for an interesting wargames terrain created with great attention to detail and production (guaranteed by Kromlech company) check our web store: www.bitsofwar.com

Kromlech sells Heavy Duty Modelling Knife, PVA Glue, Superglue, Superglue Activator, and cutting mat, but does not recommend to use these products by children under 16 years old without adult supervision.

EXPLANATION OF SYMBOLS



DRY TEST



CUT/TRIM WITH CARE



GLUE



DON'T GLUE



PAY ATTENTION



EXTRA PART



CONSTRUCTION ORDER

RECOMMENDED ACCESSORIES



KROMLECH SUPER GLUE



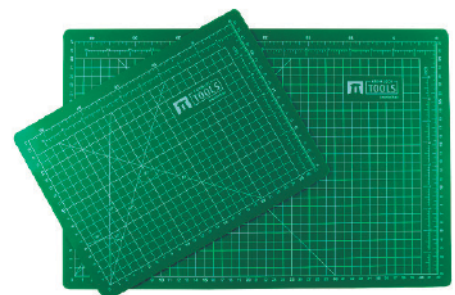
KROMLECH HEAVY DUTY KNIFE



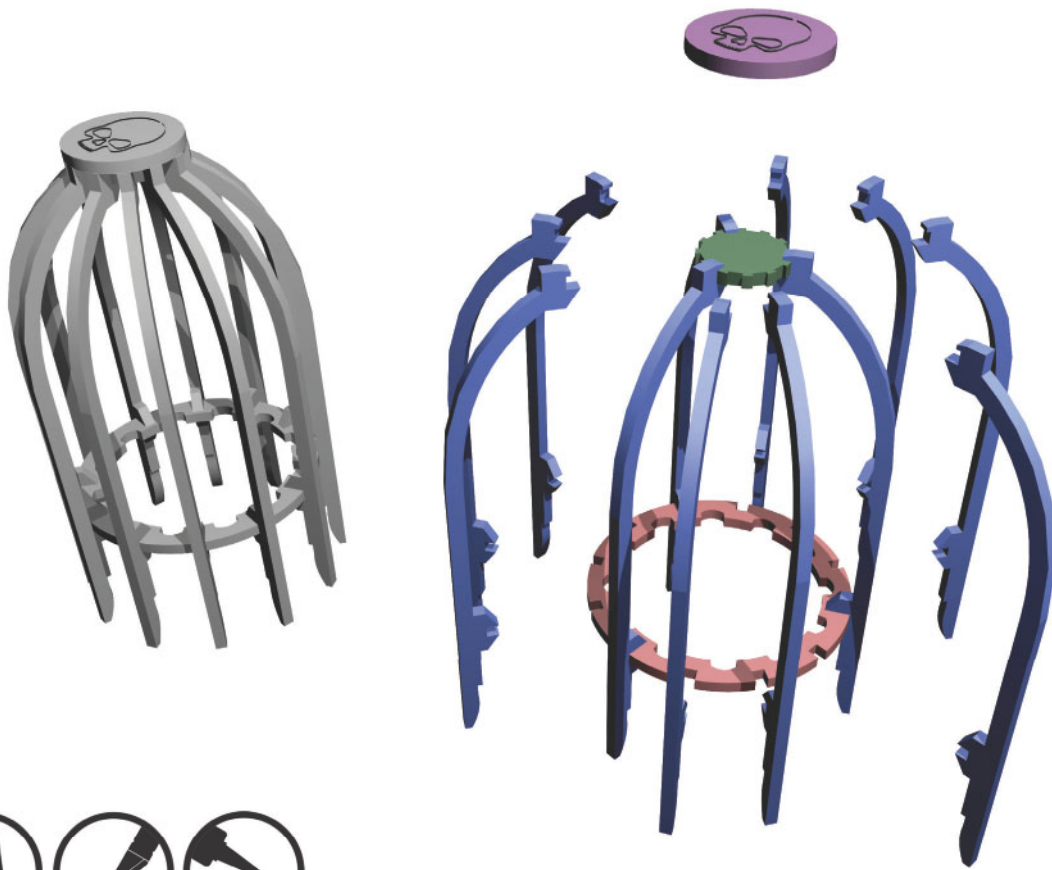
KROMLECH SUPER GLUE ACTIVATOR



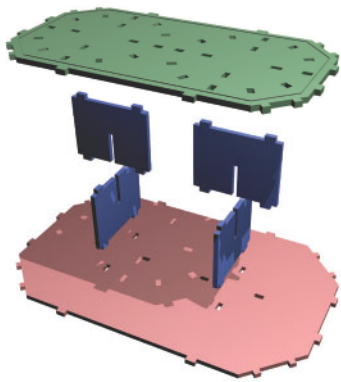
KROMLECH PVA GLUE



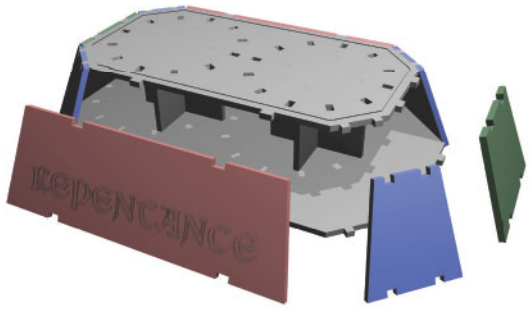
KROMLECH CUTTING MAT



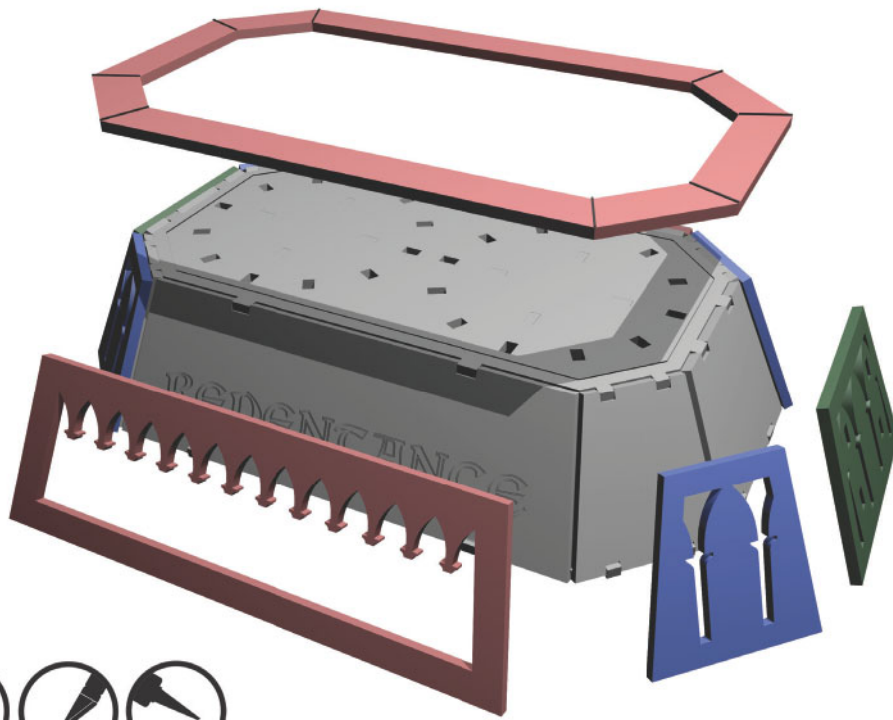
1



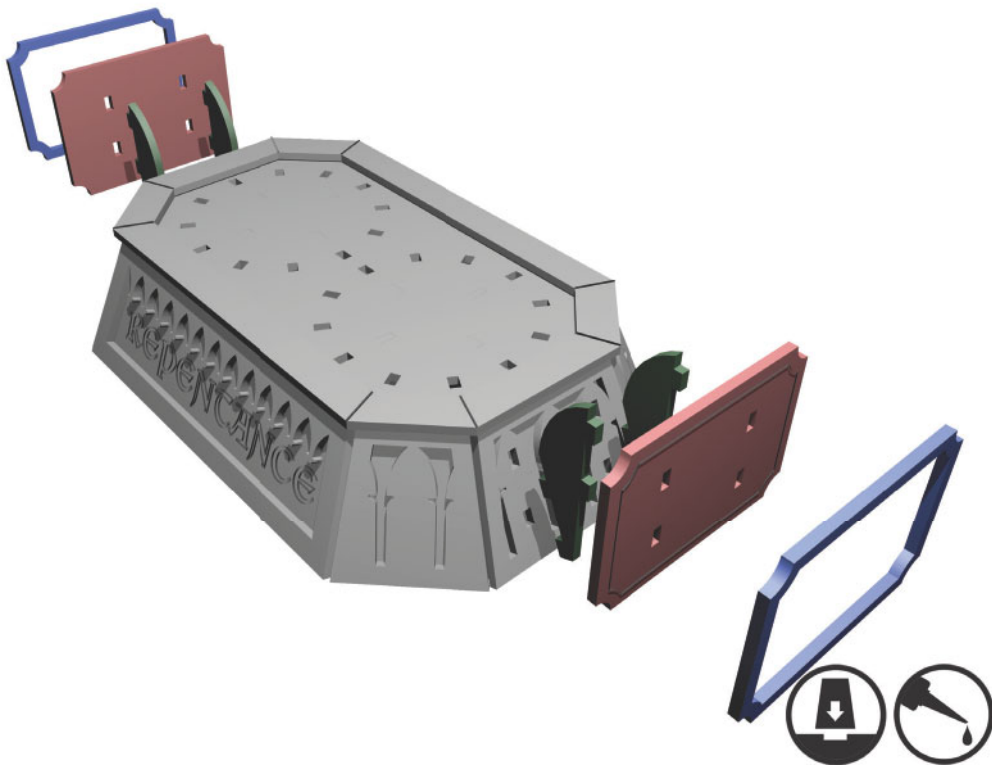
2



3



4



5

FINISHED STRUCTURE

